



Lifeskills Management Center 2010 Annual Report

**Report From James Khalili, PhD
Executive Director**

2010 has been another exciting year in which our endowment fund and our first annual Bridge to Hope Benefit were successful in generating additional revenue. Also worth noting was the fact that our client satisfaction rate was consistently above 90%.

The Crossroads program went through multiple evaluations and assessments by the state and independent researchers that found that over 50% of the graduates were

adjudication free 10 years later. Although, what is more significant is that 86% remained adjudication free at 12 months after program completion, which is the standard of comparison among intervention programs.

We were able to improve our interior space with a grant from The Home Depot. Parents, youth and staff volunteered over a 100 hours of their time to make this project a success. We hope to find funding in 2011 to

make improvements to the exterior of the building.

Although we are seeing the ripple effects of the economy in a decrease in prevention and intervention funding, agency productivity and quality of work as indicated by client participation, were both excellent and we look forward to diversify our funding resources in 2011 and beyond.

Inside this issue:

Program Update Crossroads	2
Program Update Project SAM	2
Program Update Access	2
Program Update Captain	3
Fundraising	3
Fiscal Update	4

**Report From Barbara Ladd, BA, MA
President, Board of Directors**

The board of Lifeskills Management Center continues to be enthusiastic about our mission, staff, and programs. We welcomed to our ranks Janette Sheldon, former Johnson County Juvenile Court judge; she brings a fresh perspective to the board as we continue to set new goals for the organization.

A highlight of the year was the first annual Bridge to Hope event. Amidst a lively and fun atmosphere, the

community showed its support in attendance and silent auction contributions.

A highlight of the evening was the presentation by former and current clients who had benefitted from the programs of LMC. They truly put faces on the statistics of success! Attendees were impressed with displays of their artwork as well. The aim is to continue to build on the excitement of this event and expand upon it in

the years ahead.

As we face the ever-changing challenges of serving the youth and families in our community, we continue to look for new ways to serve and contribute.



Crossroads Treatment Program is a court sanctioned intensive 24 week Cognitive Behavioral Therapy program. Youth served are between the ages of 15-17 and are at risk of being removed from the home due to continued involvement in the juvenile court system.

provide over 29,000 hours of services for 120 youth and their families.

- 95% of the participants were able to return to the home
- 86% remained adjudication free (no new charges) for six months after completing the program

The program was able to achieve the following results:

- 71% of the participants completed the entire 12 week program
- 80% of the parents/guardians participated in the entire program
- 90% of the youth increased their awareness and respect for the law

The Crossroads program was once again able to achieve it's objective of preventing out of home placement and reducing delinquency in troubled youth.

One out of every five youth (21%) who is brought before the court with a delinquency case is placed in a detention center!

campaignforyouthjustice.org/national-statistics



On any given day, nearly 87,000 juvenile offenders are not living in their homes but are held in residential placement (e.g. detention centers, juvenile correctional facilities, group homes or shelters)!
campaignforyouthjustice.org/national-statistics

Through grant funding Crossroads was able to

Programming Update - Project SAM

Project SAM (Suspension Alternative Monitoring) is a program for youth who have been placed on Out-of School Suspension (OSS) and provides supervision, school work assistance, social skills training (Model program "Life Skills Training").

modify negative beliefs and thought patterns that often lead to truancy, suspension and school failure.

program providing services to students on OSS.

From data reported to the Kansas Department of Education, Johnson County School Districts reported that over **3,000 youth** were suspended during the 2009-2010 school year. These numbers demonstrate a real community need for a

During the 2009-2010 school year Project SAM provided 1785 hours of supervision for 90 youth on OSS.

The goal is to prevent opportunities for juvenile crime, substance abuse and academic failure. Project SAM strives to

Programming Update - Access

Access Afterschool Treatment Program is a 16 week Cognitive Behavioral treatment program for youth involved in, or at risk of becoming involved in, the court system. Youth and parents participate in multiple therapy sessions per week. This program is geared towards youth

with the following risk factors: low reading skills, ADHD/ADD, learning disabilities, impulsivity, high-risk friends, inability to resolve conflicts and inconsistent parenting.

and provide over 700 hours of therapy ensuring that program youth were able to avoid further involvement in the juvenile justice system.

During 2010 the Access Program was able to successfully serve six youth and their parents

Programming Update - Captain

CAPTAIN is a twelve week program for adults who are having difficulty parenting their adolescent youth.

The program was developed by professionals with more than 25 years experience

in working with at-risk youth and families. This program will teach parents the necessary skills for raising challenging youth.

CAPTAIN is intended for parents with at-risk teens who are involved in out of

school suspension, post hospitalization, residential placement, diversion, probation, or intensive probation.

CAPTAIN is a requirement for the Crossroads & ACCESS programs and accepts court referrals.



Fundraising- The First Annual Bridge to Hope Benefit

Thank you to everyone who attended the 1st Annual Bridge to Hope Benefit at the Czar Bar on April 17 in support of Lifeskills Management Center.

The evening was a tremendous success and we were able to raise close to \$10,000 benefiting our programming.

A very special thanks to the Czar Bar for hosting our benefit, Dennis Winslett and Groove 101 for the

fantastic jazz music, filmmaker Jodi Phefferkorn for her short clip on the Crossroads Program, Michele Goldman for the delicious food, Boulevard Brewery for donating the beer, FOX 4's Rob Low for emceeing, Mike Loesch for his photography, and our volunteers: Lindsay Kautio, Shivani Desai, Hilary Dubinsky, Emily Dubinsky, Kayla Gertsema, Anna Ladd, Meredith Ladd, & Sammi Williams.

A great big thank you to those community-

minded individuals and businesses who contributed to our silent auction event: We look forward to continuing this successful fundraiser in the years to come.

If you would like to get involved in next year's event please contact lifeskillscenter@yahoo.com or contact us at 913-254-0001.

**"Hope to me is never giving up, Hope is knowing you can be successful as long as you think you can... I hope that I'm changing."
-
CC 2009
Crossroads
Graduate, age 17**



413 E Santa Fe
 Olathe, KS 66061
 Phone: 913-254-0001
 Fax: 913-782-4997
 E-mail: lifeskillscenter@yahoo.com

Lifeskills Management Center
 Providing Services for Youth & Families
 for Over 30 Years

mutualrespect.org

Check us out on:

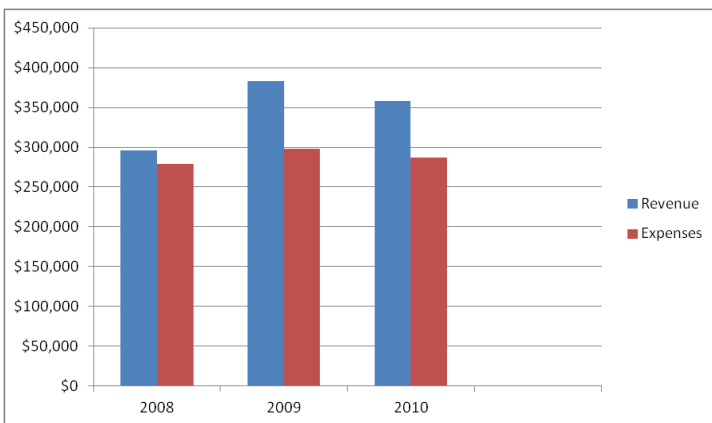


Our Mission

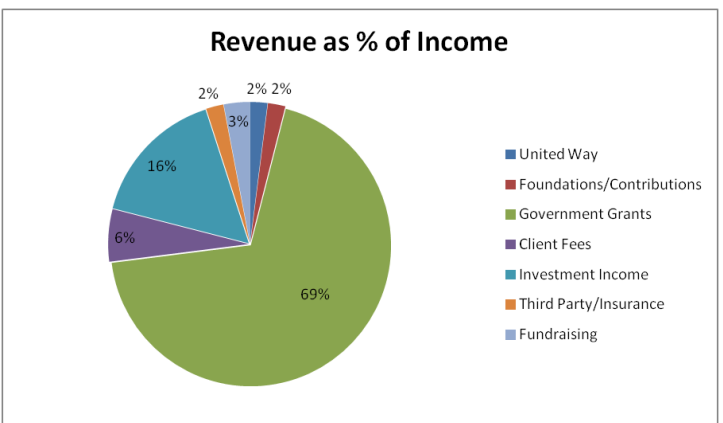
To assist at-risk youth and their parents acquire the skills needed to maintain emotionally healthy, self-controlling and productive lives. Since 1982 we have served thousands of youth and families in the Johnson County community.

We Believe that sometimes we must be part of the village that helps raise a child. Our research-based, cost-effective programming includes intensive therapy, educational supplements, parent involvement and mentoring that, combined with a motivated parent or guardian, can help redirect our youth toward a more hopeful future.

Fiscal Update- 2010



Revenue vs. Expenses 2008-2010



Revenue as a % of Income